



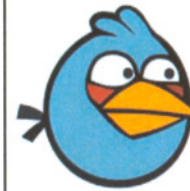
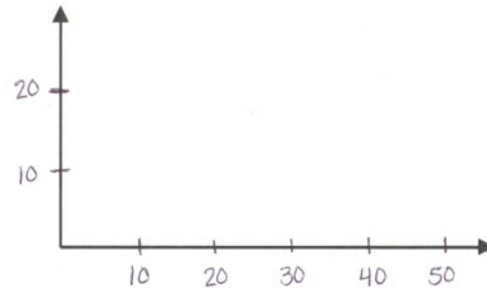
Red Bird's starting point is at (12, 0) and he lands at (48, 0). His maximum height is 17.

Axis of Symmetry:

Vertex:

Zeros:

Distance Traveled:



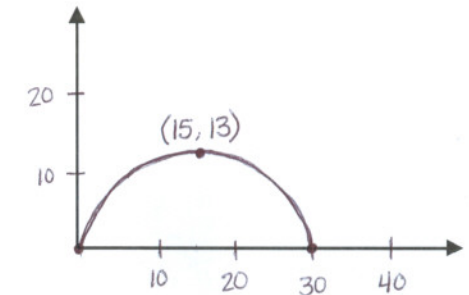
Blue Bird's path is modeled by the graph below.

Axis of Symmetry:

Vertex:

Zeros:

Distance Traveled:



Black Bird's path includes points from the table below.

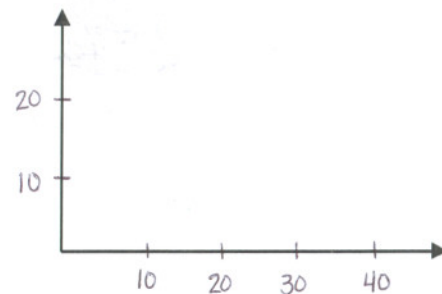
x	1	2	3	4	5	6	7	8	9
y	0	7	12	15	16	15	12	7	0

Axis of Symmetry:

Vertex:

Zeros:

Distance Traveled:



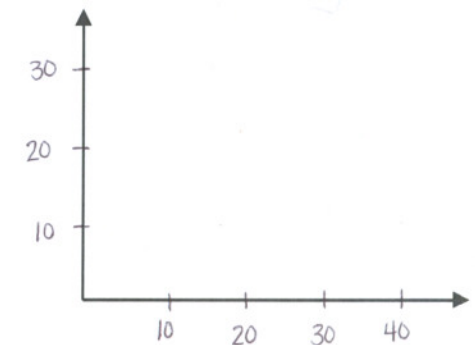
Yellow Bird's flight is modeled by the equation $y = -x^2 + 14x - 24$.

Axis of Symmetry:

Vertex:

Zeros:

Distance Traveled:



Which angry bird flew the highest? _____

Which angry bird flew the farthest? _____